

News FOR YOU...

Barron Electric Cooperative
November 2019
Photo by Melodee Eckerman

Cooperative Month, Cashback Credits, and Bucket Truck Rides



Member Account Representative Danae Becker helps distribute Cashback Credits, including one for Conrad Warder.



Enjoying lunch!



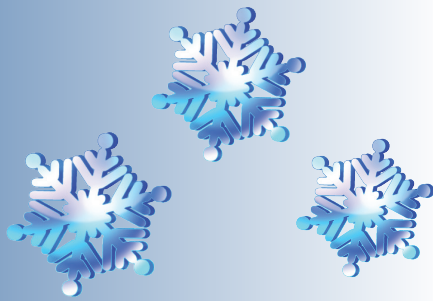
Barb Oie talks with Lineman Kyle Rose during her bucket truck ride. Barb's father, Bill Stock, was a lineman for Barron Electric.



Lineman TJ Romsos talks with John Wagenbach at the Cooperative Month event at Mosaic Telecom.

Lower Winter Rates in Effect October - May

Barron Electric Cooperative's Board of Directors approved a new rate schedule in 2018. Since Barron Electric's wholesale power costs are less in the winter months, the October - May charge is \$0.0957 per kilowatt hour. This rate has remained the same for the past eight years.



Monthly Photo Contest *Winter Landscapes*



E-mail your winter landscape photos for our photo contest. Winning photos will be used on the cover of the *News for You*, and winners will receive a \$50 credit on their electric bill. Criteria for the photos include:

- Photos must have a horizontal orientation (landscape).
- Photos must be high resolution, at least 300 dpi.
- Member must own rights to the photo.
- E-mail your digital image to memberservices@barronelectric.com by November 5, 2019. Include your Barron Electric account number, address, and phone number.
- By submitting your photo, you are granting Barron Electric Cooperative permission to use your photo in a variety of publications and on our website.

Deb Neuheisel Recognized for Her Commitment to Community



Barron Electric's System Coordinator Sue Dau(right) presents Deb Neuheisel with the Megawatt Community Service Award and a \$50 credit on her electric bill.

Barron Electric is proud to recognize Deb Neuheisel for her outstanding community service. She remarked, "My work was mostly in education and human services, so after retirement it was natural to continue with volunteer activities that were similar and have a positive impact for future generations." One of her passions is the Rice Lake International Friendship Association(RLIFA) Board, where she has been a member for 25 years. RLIFA sends and welcomes sister city visitors and students. Her primary focus has been with Czech Republic exchanges.

Deb is co-president of the Barron County Sunrise Rotary Club and has been a member for 20 years. Rotarians help people locally and abroad. She also serves on Hunt Hill's Million Dollar Match Committee after completing two terms on the Friends of Hunt Hill Audubon Society's Board of Directors. Hunt Hill is a nonprofit nature preserve and learning center, open to all, dedicated to fostering understanding, appreciation and protection of the environment.

Deb was the first interim director of the Barron County Restorative Justice Programs, now in its 20th year, and she recently returned to serve on its Advisory Board. Their main goal is to build safe, healthy communities embracing restorative practices and healing the injury caused by conflict and crime. She also serves on the Rice Lake Historical Sculpture Committee to bring sculptures to Lakeshore Drive which represent the history of the area, and serves on other groups that sponsor student scholarships.

U.S. Senator Tammy Baldwin Calls for Financial Certainty for Rural Counties

Director of Member Services Jennifer Beaudette (pictured) talked with U.S. Senator Tammy Baldwin about a tax law change to protect electric cooperative's tax-exempt status. She explained that two derechos and two tornadoes affected our system on July 19, and it cost the cooperative \$1.5 million. She added that the current law could jeopardize storm recovery efforts. Cooperatives could be forced to choose between maintaining their tax-exempt status or accepting FEMA assistance when recovering from a major storm or other disaster. U.S. Senator Tammy

Baldwin joined many of her Senate colleagues requesting that any end-of-year legislation include at least a two-year reauthorization

of the Payments in Lieu of Taxes and the Secure Rural Schools and Community Self-Determination Act Programs.



Built by the Communities We Serve

The Washburn County Emergency Management Director/PSAP(911 Dispatch Center) Coordinator along with the Sheriff's Office are enhancing communications during disasters. Barron Electric Cooperative had the opportunity to help with this goal by donating \$1,000 to help purchase radio communication support equipment. Carol Buck, Director of Washburn County Emergency Management, said, "We greatly appreciate Barron Electric's support of this project. The Incident Command Post (ICP) will accommodate multiple functions and is a necessary tool."

Funds for the Barron Electric donations are derived from the Federated Youth Foundation, an administrative trust overseeing unclaimed capital credits of former members.



Barron Electric Cooperative donated \$1,000 to the Washburn County Emergency Management Incident Command Post. Pictured is Carol Buck, Director of Washburn County Emergency Management, and representing First Responder Agencies within Washburn County: Tucker McCumber, Radio Technician; Joyanna Helbig, Washburn County Deputy; Dennis Stuart, Washburn County Sheriff; Barron Electric Director Tim Kessler, and Keith Dahlstrom, President of the Washburn County Fire Association.

Cook's Corner

Hot Dog and Vegetable Hotdish Delores Selle

- ¼ medium head of cabbage sliced thin
- 1 cup chopped mushroom
- 2 stalks celery diced
- 1 lb. cut-up hot dogs or 1 lb. cooked hamburger
- 1 small zucchini peeled and chopped
- 3 teaspoons dried minced onion
- ½ cup rice
- 1 can tomato soup
- 1 can water

Sprinkle with 2 teaspoons all season salt. Layer all ingredients except soup and water. Mix soup and water. Pour over top. Bake at 350 degrees for one hour covered. If too moist, uncover and bake 30 minutes longer.



News FOR YOU...

Barron Electric Cooperative
Dallas Sloan—General Manager
Carrie Baribeau—Editor
cbaribeau@barronelectric.com

Office Hours
7:45 a.m. - 4:30 p.m.
Monday - Friday

1434 State Highway 25 North
PO Box 40 • Barron, WI 54812
(715) 537-3171

Toll Free: 1-800-322-1008

For Outages Only:

866-258-8722

www.barronelectric.com

*Published for the members of Barron Electric.
If you have any comments regarding the
newsletter, please e-mail
cbaribeau@barronelectric.com*

*Barron Electric is an equal
opportunity provider.*



Director Notes

Randy Cook is President of Barron Electric's Board of Directors and represents District 7, which includes the following townships: Stanley, Sumner, Strickland, Stubbs, Rusk, and Big Bend.

Condensed Board Minutes

August 28, 2019



- Director Helm gave the treasurer's report, with comments by Manager Sloan. A report of vouchers for the month was presented as part of the board packet as follows: #96518 thru #96681 of CCF Bank was in the amount of \$598,361 and capital credit estate checks in the amount of \$24,163. Director Helm reported on activity of total receipts in the office - \$2,420,372; total receipts by wire and ACH - \$1,562,986; disbursements by ACH, EFT, wire - \$2,935,329; transfer of funds was made for payroll - \$310,199 and power bill paid 08/28/19 in the amount of \$2,574,496.
- Form 219 summarizing construction activity for the past month in the amount of \$63,623.75 was presented for approval, and included new services - \$1,825.75; change jobs - \$5,472.51; miscellaneous - \$56,325.49 and 21 retirements. The Form 219 stood approved as presented.

The Furlotts Test Drive the All-Electric Chevy Bolt



Bob and Bonnie Furlott enjoyed test driving the Chevy Bolt at Barron Electric's Electric Vehicle Event in September. The Furlotts share the same concerns as others regarding the amount of charging stations, particularly in rural areas. Dairyland Power Cooperative and Barron Electric are working to increase the number of charging stations in the Dairyland service area. Here are some advantages of electric vehicles:

- EV operation can be three to five times cheaper than gasoline and diesel powered cars, depending on the price of gas and electricity.
- EVs have no tailpipe emissions and require less maintenance.
- Electric vehicles can be charged at home with a standard 120V outlet or a 240V level 2 charger can be installed for faster, more efficient charging. A level 2 charger may require electrical upgrades to your home.
- EV range is typically 80 to over 300 miles on a full charge.

Source: www.powermoves.com/electric-vehicles