

Barron Electric Cooperative
October 2022
Photo by Lois Leis



News FOR YOU...

Cashback Credits Gives Us the Opportunity to Connect with Our Members

Can you believe it was 2019 when we hosted the last cooperative month events? We are so excited to have the opportunity to meet with our members in person and return more than \$2,000,000 during Cooperative

Month. This return is the largest in history and includes Barron Electric and Dairyland Power cashback credits, as well as the Nuclear Waste Policy Act refund.

Cooperatives all share a passion for serving their members and

helping the local communities thrive. We look forward to celebrating Cooperative Month with you on the following dates:

Join Us at Cooperative Month Events

Cashback Credits, Free Food, and More

Tuesday, October 4

11:00 a.m. - 1:00 p.m.
Barron Electric's Spooner Office
1550 Paulson Drive
Spooner, WI

Thursday, October 6

11:00 a.m. - 2:00 p.m.
Mosaic Technologies
401 S. 1st Street
Cameron, WI

Blood Drive: 11:00 a.m. - 4:00 p.m.
Visit redcrossblood.org to see times available or call 1-800-RED CROSS (1-800-733-2767).

For those members unable to attend the Cooperative Month events, checks greater than \$10 will be mailed by the end of October.



Celebrate Cooperative Month

Enjoy a Successful Hunt with Products from Whitetail Products Gone Wild



A squirrel scurries through a pile of leaves, the cold breeze sends a chill, the coffee hits the spot, and a buck comes into view. Breathless.

Attracting buck and bear is Aaron Pisa and Nicky Repka's business, Whitetail Products Gone Wild, which started in the kitchen of their home located on Barron Electric lines. They discovered deer really enjoyed pumpkins and squash. They started to dehydrate different fruit and continued to perfect the recipe creating a high quality, all-natural hunting product consisting of vitamins and minerals. The buck are attracted to the flavor. This new business has already outgrown its space and includes plans for an 8,000 square foot addition. Currently, Whitetail Products creates approximately 15,000 products annually, but plans are to expand to 500,000 products due to new vendors. Products can be purchased at Scheels and hundreds of retail stores across the United States, as well as at whitetailproductsgonewild.com. Products include the following deer attractants: pumpkin/squash, green apple, beets/turnips, roasted soybean, white oak acorn, red hot estrus, mineral powder, and mineral liquid. Bear attractants include blueberry caramel topper, blueberry caramel concentrate spray, salted caramel topper, salted caramel concentrate spray, cotton candy topper, and cotton candy concentrate spray.

Enjoy a successful hunt. Visit them on Facebook or e-mail whitetailproductsgonewild@gmail.com. Whitetail Products is a proud sponsor of their community.



Pictured left: Aaron Pisa and fiancée Nicky Repka use their Big Buck Attractant, which produces excellent results. Pictured are Big Buck and Big Bear Attractants sold at Whitetail Products Gone Wild.

Give Safety A Shot When Preparing for Hunting

Safe Electricity urges hunters to take precautions and be aware of potential electrical hazards while hunting.

Before leaving for a hunting trip, make sure that you have safety items to signal for help in case of an emergency. Always carry emergency supplies in the event of an accident including a cell phone,

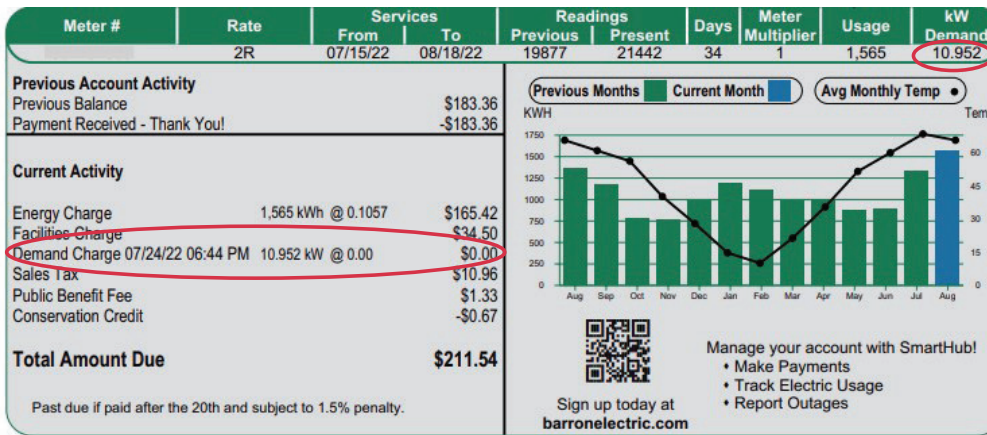
whistle, and flashlight. Note the location of power lines and other electrical equipment before you begin a hunt. Be especially careful and observant in wooded areas where power lines are easy to overlook.

Obey all signs or postings that advise electrical safety, especially when selecting the location for

a tree stand. Tree stands are the leading cause of hunting injuries. If you are using a tree stand, make sure you read the manufacturer's instructions and inspect the stand for wear before use. Never use power poles to support a tree stand. Look for an ideal tree for your stand, one that is sturdy and alive.

(continued on page 3)

Electric Bill Contains Demand Reading



Members will see KW Demand on their billing statement. Demand is the maximum requirement of electricity needed at any given time. Imagine putting marbles in a tube. If you only have one tube (or power line), only so many marbles are going to flow through the tube at any given time. The more electrical devices that are operating at one time, the higher the demand. Residential rates do not include a charge for demand. This is for informational purposes only at this time. However, future rates may include demand charges.

Why is demand important?

Barron Electric must plan for future growth and design electric power lines, transformers, substations and other equipment to supply the maximum requirement of electricity by all members.

Congratulations Brianna on Her Winning Poster



Brianna was Barron Electric's winner of the Electrical Safety Poster Contest sponsored by the Wisconsin Electric Cooperative Association.

Food Drive

Bring food or personal hygiene items to Cooperative Month events on October 4 and October 6 and your name will be entered into a prize drawing.



Give More Life Donate Blood

Blood Drives

Thursday, October 6, 11a.m. - 4p.m.
Mosaic Technologies
401 S. 1st Street • Cameron, WI

Friday, October 14, 9 a.m. - 3 p.m.
at Barron Electric Cooperative
1434 State Highway 25 North
Barron, WI

Visit redcrossblood.org to see times available or call 1-800-RED CROSS (1-800-733-2767).

Hunting Safety

(Continued from page 2)

While going up to the stand, keep at least three points of contact while you climb. When setting up and taking down the stand, make sure you do not make contact with any overhead electrical equipment.

Never shoot nearby power lines or other electrical equipment. A single shot can cause vast damage to the electrical system. Damage to electrical equipment can result in power interruptions and physical risks to those nearby.

If you are using a portable electrical generator on your hunting trip, make sure that you do not run it in a confined area. Do not use it inside a cabin or RV. Make sure that it is used outside where there is plenty of ventilation.

Focused on Safety

Barron Electric Cooperative sponsored an EMT training session which focused on safety when responding to electric vehicle accidents. Roger Carlson, Instructor at Safety and Security Consultation Specialist, LLC, shared information with more than 70 First Responders. They had the opportunity to view electric vehicles including a Tesla, Ford Lightning, Nissan Leaf, and Chevy Bolt and the schematics for each one.



Left: Instructor Roger Carlson, holding papers, talks with participants about the schematics of electric vehicles and how to be prepared in an accident situation.

News FOR YOU...

Barron Electric Cooperative
Aaron Torud - General Manager
Carrie Baribeau—Editor
cbaribeau@barronelectric.com

Office Hours
7:45 a.m. - 4:30 p.m.
Monday - Friday

1434 State Highway 25 North
PO Box 40 • Barron, WI 54812
(715) 537-3171

Toll Free: 1-800-322-1008

For Outages Only:
866-258-8722

www.barronelectric.com

Published for the members of Barron Electric.
If you have any comments regarding the
newsletter, please e-mail
cbaribeau@barronelectric.com



Barron Electric is an equal
opportunity provider.

*Condensed Board Minutes July 27, 2022

* [View full board minutes on SmartHub at barronelectric.com.](http://barronelectric.com)

Randy Cook is President of Barron Electric's Board of Directors and represents District 7, which includes the following townships: Stanley, Sumner, Strickland, Stubbs, Rusk, and Big Bend.



- Director Kessler gave the treasurer's report, with comments by General Manager Torud. A report of vouchers for the month was presented as part of the board packet as follows: #100545 thru #100614 of CCF Bank in the amount of \$309,867 and capital credit estate checks in the amount of \$36,467. Director Kessler reported on activity of total receipts in the office - \$2,042,259; total receipts by wire and ACH - \$1,215,143; disbursements by ACH, EFT, wire - \$2,499,216; transfer of funds was made for payroll - \$208,523 and power bill paid 07/27/2022 in the amount of \$2,223,953.
- Form 219 summarizing construction activity for the month of June in the amount of \$326,321.65 was presented for approval and included new services - \$19,657.45; change jobs - \$25,435.81; Other Work Order Projects - \$281,228.39 and 0 retirements. The Form 219 stood approved as presented.
- Outages year-to-date stand at 58,701 consumer hours off, which is 375.27% above 2021 hours of 12,351.